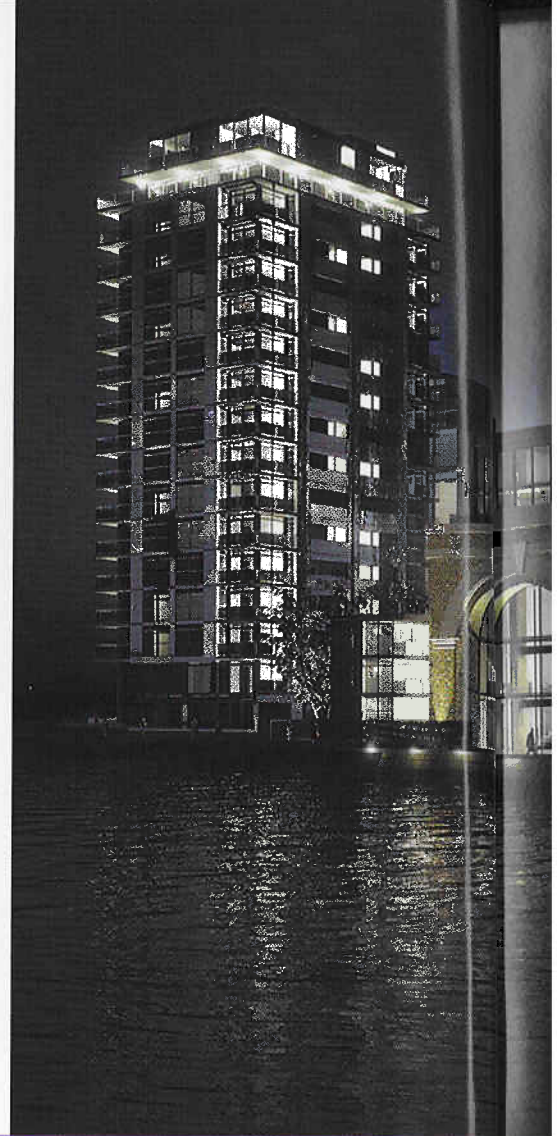


by **Mark O'Grady** and **William Avery**, Lane Castle

New riverside habitat for Greenwich culture vultures



THIS STUNNING APARTMENT SCHEME MIXES URBAN LIVING AND CREATIVE INDUSTRIES WITH ITS OWN ONLINE ARTS MAGAZINE, PERFORMANCE VENUE AND STUDIOS

At the heart of south-east London's creative hub, construction of a stunning new residential development is about to begin. A mixture of culture and lifestyle at the heart of one of the capital's most exciting urban quarters will soon be coming to the market.

The development of Paynes & Borthwick Wharves on the River Thames at Deptford, West Greenwich, aims to create a new cultural destination with residential apartments, art galleries, a restaurant and retail space, providing a focus for the area's thriving artistic and creative community. A combination of new build and carefully restored listed buildings, the scheme will provide 257 apartments in a stunning, new 18-storey tower with outstanding river views, and will open up the riverfront to the public, reinstating the historic route of Middle Watergate – a route that has been closed off for around 150 years.

In outline, the development offers a combination of 1-bedroom, 2-bedroom and 3-bedroom flats, plus top floor penthouses, in addition to 10 live/work units. Overall, the Paynes & Borthwick development will total some 32,500 sq m (350,000 sq ft) within the site area. This includes listed sections of Paynes Wharf with its dramatic Italianate arches, where the north, south



Photos: Assael architects

